

The Bespoke “Classic” Wedding Dress Display Cabinet.

Is the future of your wedding dress part of the plans for your big day??

Some brides will sell their dress, others might re-purpose it. Many brides will place their dress in a box and store it somewhere out of sight to keep it safe. Be different, why not frame it in a purpose made display cabinet, and display it as a beautiful piece of personal art.

If you have a wall, or corner, in a room or an area on a landing, displaying your dress and accessories would be a lovely thing to do.

We have teamed up with Marc Davies, an award-winning cabinet-maker based in Milton Keynes creating furniture for both domestic and commercial settings.

Marc Davies

Marc’s portfolio comprises free-standing & built-in furniture, spanning from large elegant wardrobes & console tables to small beautiful jewellery boxes. We are now adding the Bespoke “Classic” wedding dress display case to that portfolio.

In 2013, Marc was awarded the FSB Young Businessman of the Year for the whole of Buckinghamshire, in 2021 he was a winner in the Customer Excellence category at the Buckinghamshire FSB Business Awards. In 2023 he won the 2023 MK Business Achievement Micro Business Award after being a finalist in the 2019 round competing against multi-national manufacturing companies.

Marc has been featured on Channel 4 Grand Designs; appeared under editor’s choice in Period Homes & Ideas magazine; was showcased under 'Best of British' in Homes & Antiques; has been selected for shows in London; and was interviewed for BBC's Handmade Revolution. In 2022 he was featured on More4 Warplane Workshop after creating internal furniture for a Lockheed Electra.

The Materials

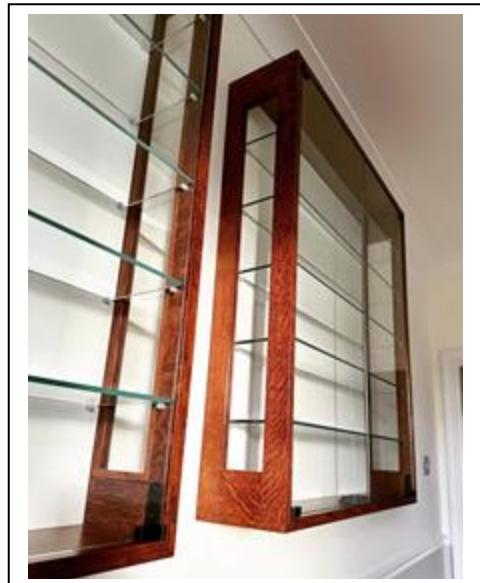
All the materials used are of the highest quality wood, sourced from 100% environmentally sustainable woodland sources. The use of chemicals in finishes is minimised to both help preserve the environment, keep you safer in your home and preserve the displayed items.

Wherever possible materials are classified as being to “Archival” or “Museum” standard. This means that they are made from acid free and PH neutral materials that do not degrade the items being displayed by either giving off pollutants that can degrade material over time, or in the case of glass, allow UV rays to stain, colour lighten or otherwise damage displayed items.

The “Classic” Wedding Dress Display Cabinet

We can make for you, your own design of wedding dress display case that you can either customise yourself with internal fixtures, or have us fit for you, to allow you to hang or mount your wedding dress. Normal display cabinets tend to be rectangular in shape and be floor standing as a regular cabinet or corner unit, or wall mounted or leaning. A bespoke display cabinet can be a regular, or irregular shape made to fit any available place ranging from an alcove or cavity knocked into a wall, to a gap between other pieces of furniture. The finish of the display cabinet can be matched to your existing furniture, whether stained or painted.

The “Classic” design - show right - is based on a hand-made and finished wall mounted display cabinet made of high quality oak, stained and finished to your own requirements. The example shown is of a shelved display cabinet made of stained and varnished oak, with a backboard painted to match the wall on which it is fixed. The sidelights are made of toughened glass, as are the 2 front hinged and opening main doors. The glass has some UV protective properties and the opening doors are unframed, with hinges at the top and bottom. This particular example has been equipped with removable toughened glass shelves and the frameless doors hinged at the top and bottom.



© Marc Davies – “Classic” Cabinet



© Marc Davies – “Classic” Cabinet

Typical “Classic” Cabinet Cost

Each display cabinet will be made to individual customer’s requirements, and will be priced accordingly. Additional information may be required from the customer. The following prices are given as an indication only.

Cabinet of the size 100cm tall x 80cm wide x 25cm deep external measurements made of stained and varnished oak with solid (no – side lights) sides deep. Toughened glass, hinged opening doors as shown above. Equipped with wall mountings and backboard painted to match the wall on which it will be fixed. Suitable for a flat mounted bodice or partially filled bodice laying on a background of the dress train: £2,700.00 + Delivery.

If a glass sidelight were fitted on each side, then the additional cost would be in the region of £1,425.00

If instead of front opening doors, there was a removable, or side opening oak frame, then the additional cost would be in the region of £1,050.00

If instead of toughened glass, full reflective UV protective glass were to be used then a removable front frame WOULD be required as the glass could not be hinged in the same way as toughened glass, then the additional cost of the glass only would be in the region of £900.00

Cost with sidelights, full protective glass and a front frame would be in the region of £6,075.00 + Delivery.

Modified “Classic” Designs

Other variants of the initial design could be:

Higher to allow a full display of the dress train underneath the bodice.

Deeper to fully pack the bodice to its full shape, with or without sidelights to the front half of the sides.

Higher and deeper to mount the dress on a mannequin.

Delivery

The cabinet will not be sent by a normal courier service but by a specialist delivery service that ensured that your cabinet was properly protected during the delivery process. Cost of delivery will depend upon the delivery address, and whether a fixing service was required as well. Delivery can be made overseas with the customer responsible for import duty related costs.

Internal Fittings

The CLASSIC Display Cabinet will usually need internal fittings that will allow you to suspend or mount your wedding dress. These will vary from maybe some simple display hooks from which you can suspend

your dress, or a clothes rail from which to hang a hanger for your dress. You could also have a fine quality cloth liner added which will allow you to gently fasten your wedding dress to it. Some dresses are displayed with the train being used as the background to the bodice. Larger display cases might have a half-mannequin or even a whole mannequin as a display stand. You will find a wide variety of suitable fittings on Etsy.

Additional fittings could include fittings to hold your bouquet, and shelving to display your items such as shoes or veil. Don't forget the Bridesmaid outfits either.

You can either buy the fittings yourself and attach them, or send them to us and we can fit them for you.

The display case could also be illuminated from the inside by the inclusion of low power electric lights giving "daylight" style, but low UV emitting lighting.

Other Marc Davies Designed Products.

Marc Davies has designed, built and installed numerous items of furniture that range from the more traditional tables and wardrobes through to fish tanks surrounds and aircraft interiors. Here are some examples of his installed projects.

